

Branch Unit Closure

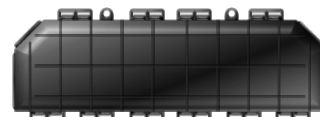
Branch closure is designed to connect two microducts and to branch-off tubes without any interruption of connectivity. Using this closure, the ducts are protected and easy to reopen for maintenance. Knet's Branch Closure has three different types (I/Y, T and D type)



I/Y type



T Type



D Type

Benefit

- Light weight
- Easy installation
- Easy branching
- Microduct protection at joint/distribution point
- Accommodate various types of microduct

Technical Specification

Item	Product Code	W(mm)	D(mm)	H(mm)	Weight(g)	Thickness (mm)	material	Port No.
I/Y Type	RUK4K	400	113	76	584	3	PP	2/2
T Type	RUT4K	310	195	80	656	3	PP	3
D Type	RTDXK	450	108	187.25	830	3	PP	2/2

Applicable Duct

I/Y Type

Main Port

Up to DB 12/10mm 7way (OD: 44.8mm)

Up to TWD 14/10mm 4way (OD: 30.0mm)

Distribution Port

Up to DB-HS 12/10mm 2way (OD: 31.0x19.0mm)

D Type

Main Port

Up to TWD 18/14mm 7way (OD: 56.0 x 51.2mm)

Up to DB-HS 5/3.5mm 24+1way (OD: 37.5mm)

Distribution Port

Up to TWD 18/14mm 2way (OD: 38.0 x 20.0mm)

Up to HS 5/3.5mm 7way (OD: 22.0mm)

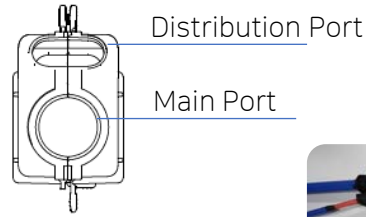
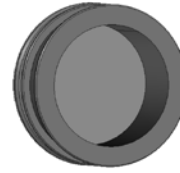
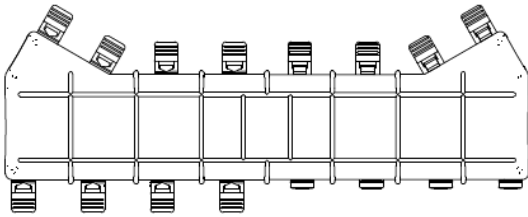
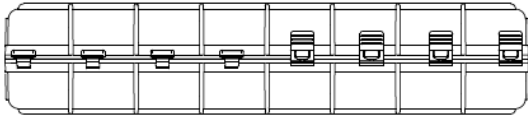
T-Type

Up to DB 5/3.5mm 24way (OD: 36.4mm)

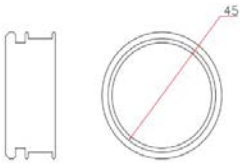
Up to TWD 7/3.5mm 12way (OD: 30.0mm)

Branch Unit Closure

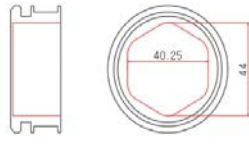
I/Y Type Specification



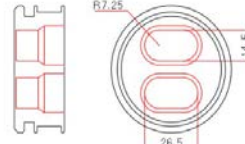
Main Port



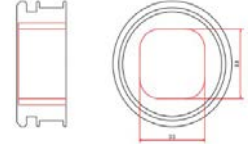
RSC-A1



RSC-A2

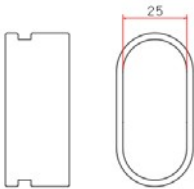


RSC-A3

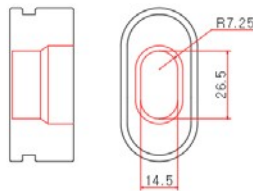


RSC-A4

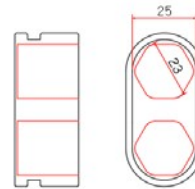
Distribution Port



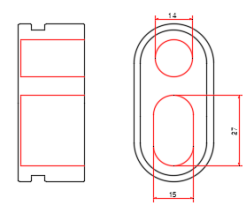
RSC-B1



RSC-B2



RSC-B3

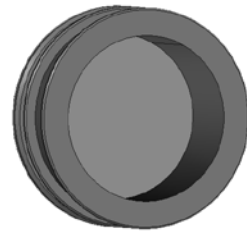
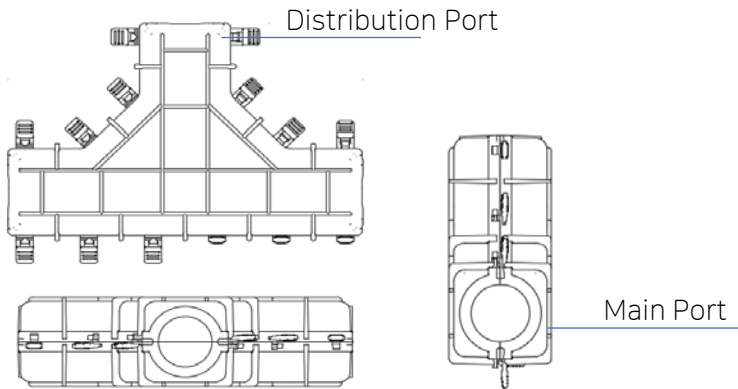


RSC-B4

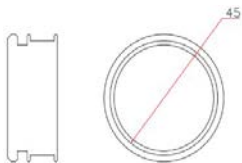
Product Code	Application Port	Hole size (mm)
RSC-A1	Main	Ø45
RSC-A2	Main	40.25 x 44
RSC-A3	Main	14.5 x 26.5 x 2holes
RSC-A4	Main	33 x 33
RSC-B1	Distribution	25 x 49
RSC-B2	Distribution	14.5 x 28.5
RSC-B3	Distribution	23 x 25 x 2holes
RSC-B4	Distribution	Ø14, 15 x 27

Branch Unit Closure

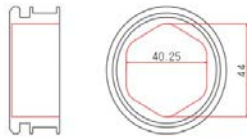
T Type Specification



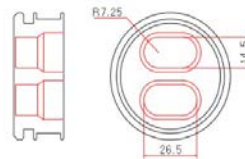
Main/ Distribution Port



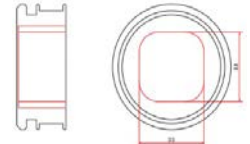
RSC-A1



RSC-A2



RSC-A3

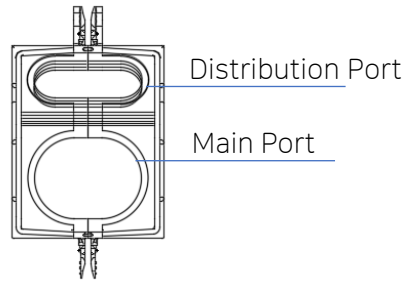
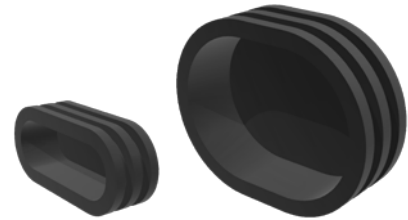
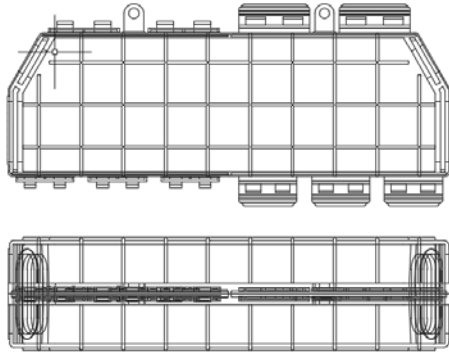


RSC-A4

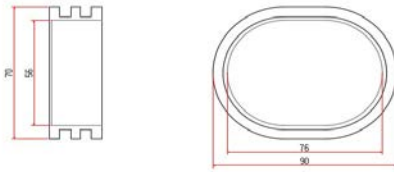
Product Code	Application Port	Hole size (mm)
RSC-A1	Main	Ø45
RSC-A2	Main	40.25 x 44
RSC-A3	Main	14.5 x 26.5 x 2 holes
RSC-A4	Main	33 x 33

Branch Unit Closure

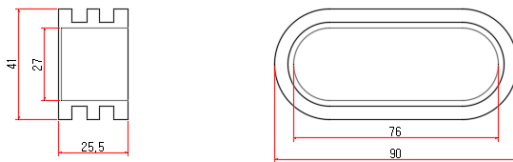
D Type Specification



Main Port



Distribution Port



Product Code	Application Port	Hole size (mm)
RSC-C1	Main	76
RSC-D1	Distribution	76X27

Branch Unit Closure

 Instruction


- 1** Cut duct using duct cutter



- 2** Mark the spot of duct to take off the sheath



- 3** Cut the sheath using Hook cutter Or Slitter for double sheathed duct



- 4** After removing the sheath, taping to fix microtubes and sheath



- 5** Make a hole of rubber sealing cap to insert the microtube



- 6** Insert microduct inside rubber cap and fix with cable ties.



- 7** Align microtubes of both side



- 8** Cut microtubes



- 9** Connect two microtubes after taking out from closure



- 10** After coupling microtubes, sort tubes in zip zap shape.



- 11** Tight up the rubber cap with Cable ties



- 12** Close the cover and snap the hinges on top and bottom